



**Bandit**  
EMPLOYEE-OWNED

**THE BEAST® XP SERIES:**  
HORIZONTAL GRINDERS





# TOW-BEHIND UNITS

Since 1983, Bandit has been providing equipment for a multitude of wood waste processing markets. Our vision since the beginning, is to build quality, highly productive, easy to maintain equipment providing years of dependable service. The commitment for quality, innovation and dedication is instilled in every Bandit employee and is one of the main reasons why Bandit became an Employee-Owned Company (ESOP) in 2018. These core values ensure each Bandit machine will leave the factory ready to exceed your expectations.

**Join the Bandit family. Call your authorized Bandit dealer today!**



# TRACK UNITS



# ELECTRIC UNITS



# THE BEAST®

**THE BEAST® HORIZONTAL GRINDERS ARE ABLE TO PROCESS** an amazing array of materials, turning them into valuable products. These horizontal grinders process stumps, logs, brush, wet leaves, whole trees, landscape waste, pallets, telephone poles, sawmill waste, stubborn chunk wood, chip mill and paper mill waste, ag waste such as hay and straw, shingles, plastics, and more!

The Beast has drastically evolved since entering the waste reduction market in 1995. These machines are industry proven when it comes to efficiency, durability, and the quality end-product created from the patented cuttermill.

Customers can choose from a wide variety of Models ranging from our entry level Model 1425 which is a 14" capacity grinder with a 120 horsepower engine all the way up to our Model 4680 that can be equipped with engine options up to 1,200 horsepower and has a massive 45" high x 60" wide mill opening. Most of these models can be equipped as rubber tire, track or electric stationary.

**FOR DETAILED INFORMATION ON ANY MODEL, PLEASE CONTACT BANDIT INDUSTRIES OR YOUR LOCAL BANDIT DEALER.**

## A DIVERSE RANGE OF MODELS:

- **Tow-behind units** ranging from 14" to 45" capacity powered by diesel engine options ranging from 120 to 1,200 horsepower.
- **Track units** ranging from 14" to 45" capacity powered by diesel engines ranging from 174 to 1,200 horsepower.
- **Electric units** ranging from 18" to 45" capacity powered by electric motors ranging from 200 to dual 500 horsepower.





# WHO USES THE BEAST®

IT'S NO SECRET THAT THE BEAST'S CLAIM TO FAME is producing top-dollar, high-quality products. These machines are in demand worldwide, serving mulch and biomass needs by processing everything from switch grass to brush, trees and wood chips. The Beast is also used to recycle a number of difficult-to-process materials like chunk wood, plastic pipe, roofing shingles, storm damage debris, and construction residue.



## MUNICIPALITIES LARGE & SMALL

use The Beast to turn urban wood residue into compost and fertilizer for city and citizen use. When severe storms or diseased trees affect a city, The Beast becomes an integral part of the recovery operation.



## BIOMASS PRODUCERS

use The Beast to produce a wide range of high-quality, screened ground material and wood chips for virtually any fuel wood market, including direct-fire boilers, co-fire boilers with coal, and micro chips for wood pellet production.

## RECYCLING YARDS

use The Beast to process everything from wooden pallets to roofing shingles, plastic and construction debris.

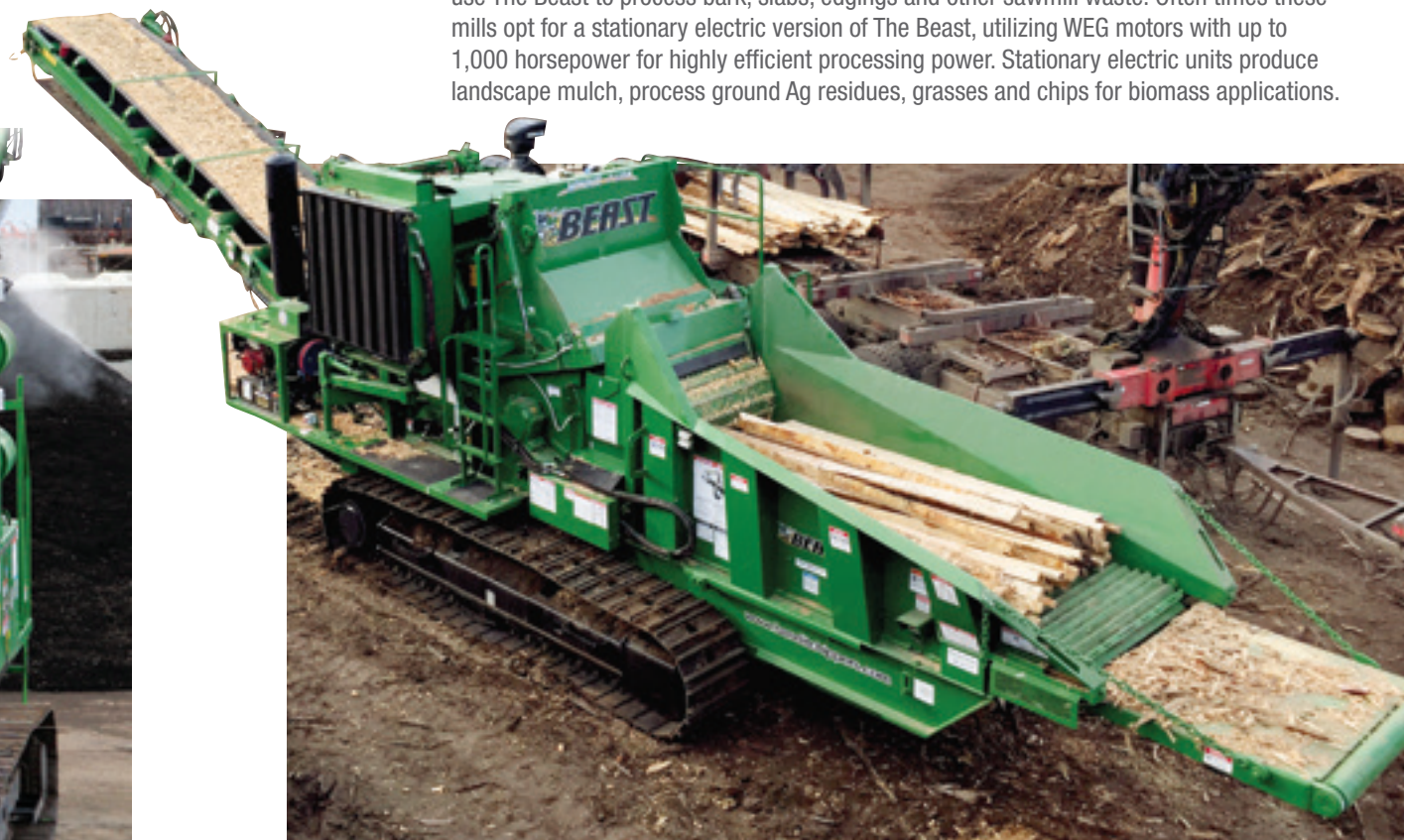
## SHINGLE PROCESSING

- The Beast patented cuttermill breaks down material quicker, producing less heat
- Less water is required throughout the grinding process, creating a better end-product
- Dedicated shingle grinding packages increase durability as well as overall production



## SAWMILLS AND CHIP MILLS

use The Beast to process bark, slabs, edgings and other sawmill waste. Often times these mills opt for a stationary electric version of The Beast, utilizing WEG motors with up to 1,000 horsepower for highly efficient processing power. Stationary electric units produce landscape mulch, process ground Ag residues, grasses and chips for biomass applications.



## TREE SERVICES LARGE & SMALL

use The Beast to process brush, stumps and stubborn chunk wood that traditional chippers couldn't handle. They also process chips that often have to be dumped at a cost, creating valuable mulch or fuel wood products in the process.



## LAND CLEARING CONTRACTORS

use The Beast to process all clearing materials on-site, often opting for a self-propelled track undercarriage to follow the clearing crews through rugged terrain. This eliminates the need to skid material to the machine, significantly increasing productivity.



# SERVE MULTIPLE MARKETS WITH ONE MACHINE.

## A MULCH COLORING MACHINE

Color Max is a high production mulch coloring system that is available on all models. This system will color mulch using less water and colorant while providing better coverage.

- Uses approximately 30% less water compared to most coloring systems
- Requires around 25% less colorant
- Provides better coverage with almost zero colorant wasted
- Quality mulch for gardens and general landscaping
- High production – up to 300 cubic yards per hour in a Model 3680

The Beast's patented cuttermill evenly distributes the colorant evenly coating the mulch.

The pump system is simple and easy to use. Hook one line to the water source and one line to the Beast and the Color Max will pull colorant directly into the flow of water. The entire set-up is remote controlled so the operator feeding the Beast can easily start and stop the flow of colorant.



## COLORING SYSTEM



## THE BENEFITS OF CHIPPING WITH THE BEAST.

Transform The Beast into a powerful whole tree chipper with knife cutterbodies on the standard cuttermill, or choose a dedicated chipper drum. Knife cutterbodies can produce a 1/4" minus end product from clean logs. Switching to a chipper drum allows The Beast to produce a variety of chip sizes from 5/8" to large 2" chips. Choose from 4, 8, or 20 knife drum depending on the size of the chip needed.

- Produce a screened product for direct-fired power plants, pellet mills, pulp mills, charcoal plants, and for metallurgical applications.
- Large mill openings on The Beast can accommodate large quantities of material at one time, significantly increasing production. Many customers chipping with The Beast quickly discover the biggest challenge is simply keeping the machine fed.



Chipping Drum for The Beast® Horizontal Grinders

## THE BEAST® MODEL 1425 14" COMPACT HORIZONTAL GRINDER

Bandit Industries' most popular compact horizontal grinder. Every feature on the 1425 is designed to maximize production. This model features a Caterpillar 120 horsepower engine, easy to tow with an approximate weight of 12,500 LBS, and is a great solution for Tree Services looking to grind logs, brush, or chips. Optional coloring system available. Also available as a track unit with Caterpillar 174 horsepower engine.

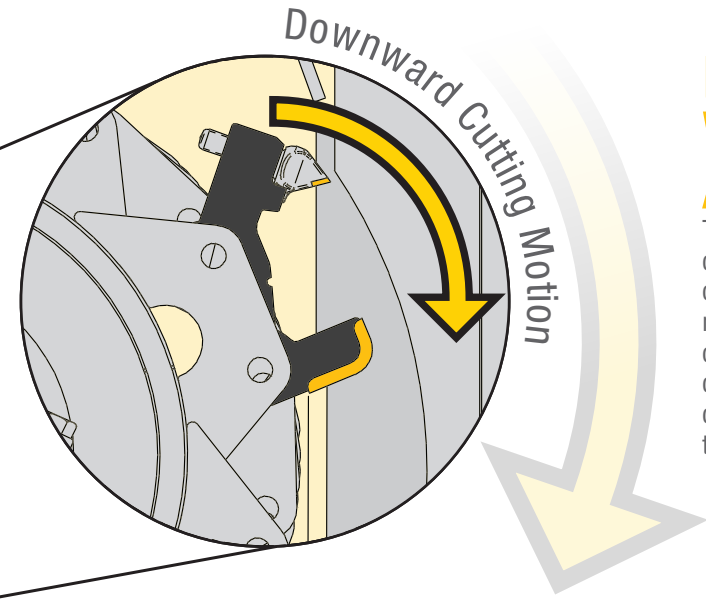
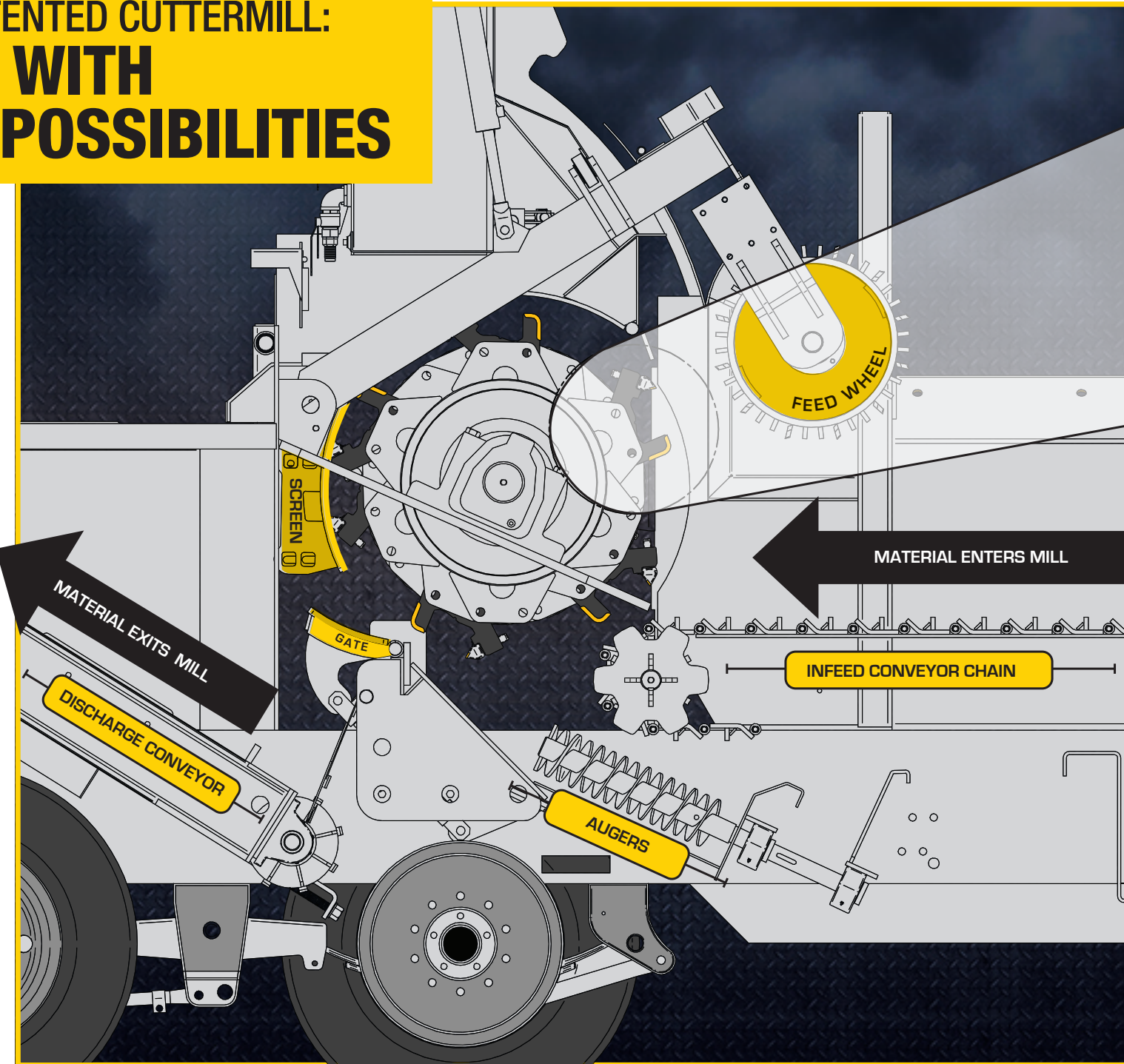


# THE BEAST® PATENTED CUTTERMILL: ONE MILL WITH ENDLESS POSSIBILITIES



## SMOOTH CUTTING & SPLITTING

The key to The Beast's success is its unique cuttermill. Using a spiral pattern with a series of teeth, cutterbodies and rakers, the cuttermill processes material using a cutting / splitting action versus other recyclers that attempt to bash material through hammering and grinding. The difference is best explained like this: it's far easier to cut down a tree with an ax than a sledgehammer.

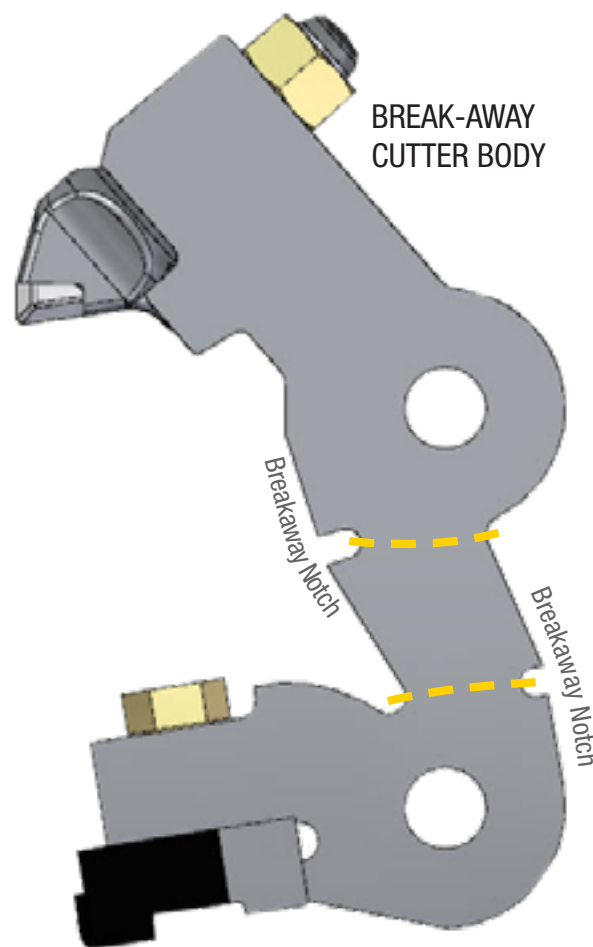


## DOWN-TURN CUTTERMILL WORKS WITH THE FLOW OF MATERIAL AND GRAVITY, NOT AGAINST IT.

The mill in most rival horizontal grinders turns in an upward direction. The cuttermill in The Beast turns in a downward direction to work with the flow of material and gravity. The downward cutting action is more aggressive and much less likely to discharge material back through the infeed. The rotation of the mill pulls material in, working with the feed system to provide better control of material into the machine. Material is less likely to turn or roll, and it's cut-to-size better on the first pass with fewer hang-ups. Machine wear-and-tear is also reduced since the mill does not grind against the feed wheel.

## DURABLE DESIGN AND HIGH PRODUCTION.

The Beast cuttermill is assembled by Bandit specialists utilizing extensive reinforcements and welding. Cutter bodies hold the cutter tooth and are shaped like a saw tooth regulating the cutting action creating a less violent grinding process compared to competitive hammermills. Each cutterbody features a break-away notch allowing the cutterbody to bend back (while remaining attached to the mill) when encountering contaminants reducing and limiting potential damage.



## REPLACABLE RAKER

A bolt on raker is attached to the cutterbody reducing wear to the cutterbody while assisting with regulating the cutting action.



## CUTTERMILL OPTIONS:

- 14 Tooth Mill (Model 1425)
- 26 Tooth Mill (Model 1680)
- 30 Tooth Mill (Model 2460, 2680 & 3680)
- 60 Tooth Mill (Model 2680 & 3680)
- 48 Tooth Mill (Model 4680)



# FEATURES AND ADVATANGES: FOR THE BEAST® REDUCTION MACHINE - MADE TO ORDER.



Bandit Yellow



Green

## MATCH YOUR FLEET!

Two custom colors available at no additional cost.



## TEETH

A wide array of tooth options are available so each grinder can be set-up for maximum production based on the material being processed.

Each tooth is also available as a fan style tooth and it is recommended that half the mill set-up has these teeth as they assist with pushing material through the screen quicker while reducing wear and increasing production.



## REMOTES

A radio remote control with tether-back up is standard on all grinders except for the Model 1425 (optional). The remote controls all grinding and track functions (if applicable).



## ELECTRIC MOTORS

For stationary grinding applications, The Beast® electric is a cost-effective alternative to diesel fuel. The Beast electric uses heavy-duty, industry proven WEG motors equipped with soft-starts to reduce the incidence of line-voltage drop. No special foundation is required; just roll The Beast in, set up, and start grinding.



## AUGERS

Augers are utilized on the Model 2680, 3680 and 4680's and assist with moving material and preventing spillage. Augers are easy to maintain, a bottom clean out door provides quick and each removal of any debris that may remain in the auger box after grinding.



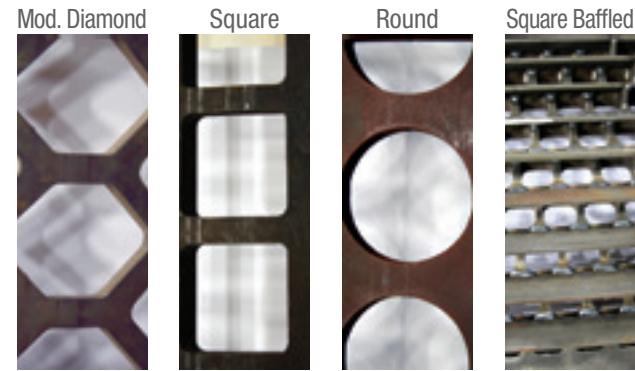
## BANDIT CONTROL PANELS

The control panels offered on each model are programmed in house at Bandit giving consistency for each different engine option and making it easier to diagnose a potential problem. The control panels display all engine parameters, fuel and hours and contains the settings for the proportional feed system.



## SCREEN CHANGING ARM

The Beast Screen Changing Arm assists the operator in quickly and easily changing and installing the screens, reducing the effort and time needed to change screens. (Available with Model 2680 and 3680 only)



## SCREENS

A wide variety of screens ranging from 5/8" to 7" hole size can be equipped on most Beast models. Various configurations including diamond, round, and square ensure optimal machine set-up based on the type of material being ground and the desired end product.

Screens are easily accessible and can be changed by being pulled from the side of the machine on the 1425, 1680 and 2460 and on the 2680, 3680 and 4680 the screens are removed from inside the grinding chamber and easily removed from a side door.

Screen wear is minimal compared to competitive grinders as most of the sizing is done at the initial cut reducing the wear of the screen while other grinders rely on the screen or grates to size the material being processed.



## INFEEED CONVEYOR AND FEEDWHEEL

All Bandit grinders are standard (1425 is optional) with a solid WDH120 steel infeed chain and is designed to handle heavy material being loaded onto it. This conveyor carries material with less spillage and is simple and easy to maintain.

## PROPORTIONAL FEED

Regulates the feed system as the engine begins to lose RPM. Can be set at a variety of speed settings based on the material being ground. Helps achieve a consistent end product while reducing fuel consumption and increasing productivity.

## TRACKS

Caterpillar steel track options are offered giving each horizontal grinder the versatility to move around easily. Great choice for land clearing and right-of-way contractors making it easy to maneuver the Beast to different grinding locations.



## DISCHARGES

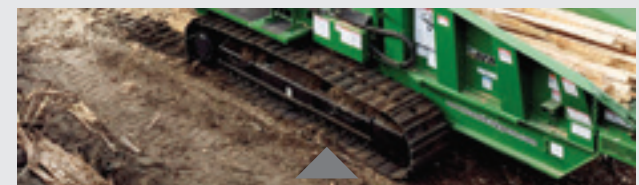
All discharges excluding the Model 1425 and 2460 track are height adjustable. Each discharge gives maximum stacking height and is equipped with a magnetic head pulled at the end to separate nails and other metal debris from the mulch pile.

## GATES

The Model 2680 on up features a hydraulic gate that sits below the screen. Like the screen, there a various hole sizes to choose from. The gate is controlled by radio remote control and can be quickly opened to remove an ungrindable contaminant if encountered.

## SELF-PROPELLED TRACK UNDERCARRIAGES

Every model can be equipped with a rugged CAT steel track undercarriage. This is a must-have option for land clearing applications, and is a very popular option for working in recycling yards and landings.



CAT TRACKS ARE POWERFUL AND OFFER  
**UNBEATABLE PERFORMANCE,**  
WITH SERVICE AVAILABLE FROM DEALERS AROUND THE WORLD.



# MACHINE SPECIFICATIONS

<b>Model 1425XP</b>	<b>CAPACITY:</b>	<b>OPENING: (HEIGHT x WIDTH)</b>	<b>ENGINE MIN./ MAX.:</b>	<b>LENGTH x WIDTH x HEIGHT:</b>	<b>WEIGHT:</b>	<b>UNDERCARRIAGE:</b>	<b>FUEL TANK:</b>	<b>HYD. TANK:</b>
<b>TRAILER UNIT</b>	14" diameter	20" x 25"	120 HP	24' 8" x 2' 10" x 9' 4"	12,500 LBS.	(1) 12,000 IB. AXLE WITH (2) TIRES	40 GALLONS	40 GALLONS
<b>TRACK UNIT</b>	14" diameter	20" x 25"	174 HP	24' 9" x 8' 5" x 9' 7"	17,805 LBS.	CATERPILLAR 308 STEEL TRACKS	40 GALLONS	40 GALLONS
<b>Model 1680XP</b>	<b>CAPACITY:</b>	<b>OPENING: (HEIGHT x WIDTH)</b>	<b>ENGINE MIN./ MAX.:</b>	<b>LENGTH x WIDTH x HEIGHT:</b>	<b>WEIGHT:</b>	<b>UNDERCARRIAGE:</b>	<b>FUEL TANK:</b>	<b>HYD. TANK:</b>
<b>TRAILER UNIT</b>	18" diameter	18" x 52"	300 - 321 HP	37' 5" x 8' 6" x 12' 2"	31,500 LBS.	(2) 15,000 IB. AXLES WITH (8) TIRES	100 GALLONS	80 GALLONS
<b>TRACK UNIT</b>	18" diameter	18" x 52"	300 - 321 HP	26' 7" x 8' 3" x 12' 6"	37,580 LBS.	CATERPILLAR 312B TRACKS	100 GALLONS	80 GALLONS
<b>Model 2460XP</b>	<b>CAPACITY:</b>	<b>OPENING: (HEIGHT x WIDTH)</b>	<b>ENGINE MIN./ MAX.:</b>	<b>LENGTH x WIDTH x HEIGHT:</b>	<b>WEIGHT:</b>	<b>UNDERCARRIAGE:</b>	<b>FUEL TANK:</b>	<b>HYD. TANK:</b>
<b>TRAILER UNIT</b>	24" diameter	24" x 60"	525 - 536 HP	42' 8" x 8' 6" x 13' 6"	48,000 LBS.	(2) 20,000 IB. AXLES WITH (4) TIRES	200 GALLONS	120 GALLONS
<b>TRACK UNIT</b>	24" diameter	24" x 60"	536 HP	39' 4" x 9' 9" x 12' 7"	62,500 LBS.	CATERPILLAR 320L TRACK	200 GALLONS	120 GALLONS
<b>Model 2680XP</b>	<b>CAPACITY:</b>	<b>OPENING: (HEIGHT x WIDTH)</b>	<b>ENGINE MIN./ MAX.:</b>	<b>LENGTH x WIDTH x HEIGHT:</b>	<b>WEIGHT:</b>	<b>UNDERCARRIAGE:</b>	<b>FUEL TANK:</b>	<b>HYD. TANK:</b>
<b>TRACK UNIT</b>	35" diameter	35" x 60"	755 HP	34' 6" x 9' 9" x 12' 5"	68,000 LBS.	CATERPILLAR 320L TRACK	160 GALLONS	150 GALLONS
<b>Model 3680XP</b>	<b>CAPACITY:</b>	<b>OPENING: (HEIGHT x WIDTH)</b>	<b>ENGINE MIN./ MAX.:</b>	<b>LENGTH x WIDTH x HEIGHT:</b>	<b>WEIGHT:</b>	<b>UNDERCARRIAGE:</b>	<b>FUEL TANK:</b>	<b>HYD. TANK:</b>
<b>TRAILER UNIT</b>	35" diameter	35" x 60"	755 HP	44' x 10' 10" x 13' 6"	62,500 LBS.	(3) 25,000 IB. AXLES WITH (6) TIRES	400 GALLONS	150 GALLONS
<b>TRACK UNIT</b>	35" diameter	35" x 60"	875 - 1,050 HP	37' 3" x 11' 7" x 12' 2"	84,900 LBS.	CATERPILLAR 325EL TRACK	300 GALLONS	150 GALLONS
<b>Model 4680XP</b>	<b>CAPACITY:</b>	<b>OPENING: (HEIGHT x WIDTH)</b>	<b>ENGINE MIN./ MAX.:</b>	<b>LENGTH x WIDTH x HEIGHT:</b>	<b>WEIGHT:</b>	<b>UNDERCARRIAGE:</b>	<b>FUEL TANK:</b>	<b>HYD. TANK:</b>
<b>TRAILER UNIT</b>	45" diameter	45" x 60"	875 - 1,200 HP	52' x 11' 7" x 13' 6"	92,000 LBS.	(4) 25,000 IB. AXLES WITH (16) TIRES	375 GALLONS	200 GALLONS
<b>TRACK UNIT</b>	45" diameter	45" x 60"	875 - 1,200 HP	41' x 11' 8" x 12' 8"	95,200 LBS.	CATERPILLAR 325EL TRACK	400 GALLONS	200 GALLONS

Individual flyers that provide more detailed information on each model are available upon request or from our website.

All specifications, dimensions, standards and options are subject to change without notice. Dimensions and weights may vary, depending on options and engines selected. Bandit Industries, Inc. reserves the right to change designs, specifications and options without prior notice. All figures shown in technical data were current at the time of printing. However, these can change as a result of further product development and regional distribution differences. Please contact your authorized Bandit dealer or Bandit Industries, Inc. for more information. Made in the USA. Printed in the USA. © 2022 Bandit Industries, Inc. All Rights Reserved.